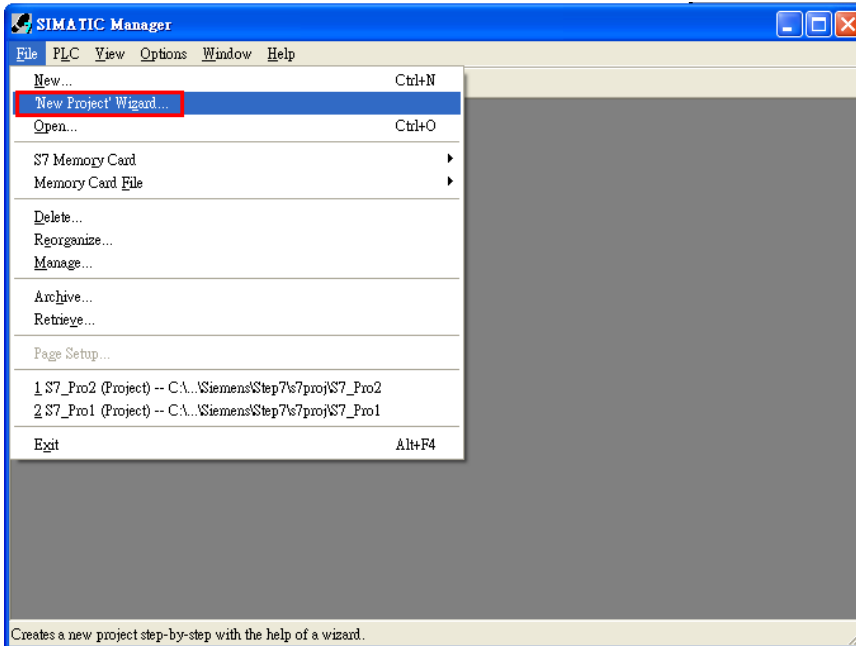


I-7550 & SIMATIC STEP 7 Configurations

1. Double Click “SIMATIC Manager” icon to open “SIMATIC Manager”

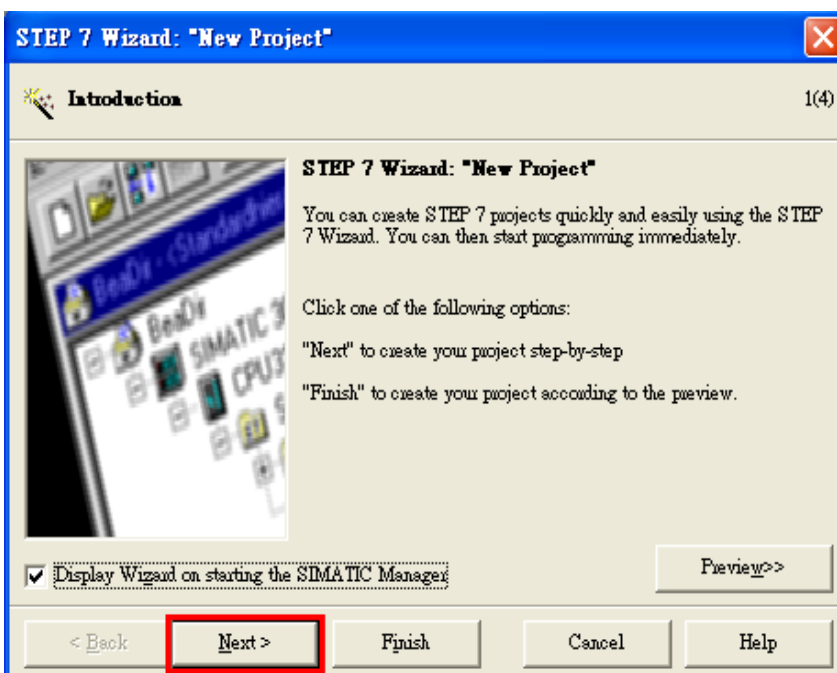


2. Open “New Project Wizard”

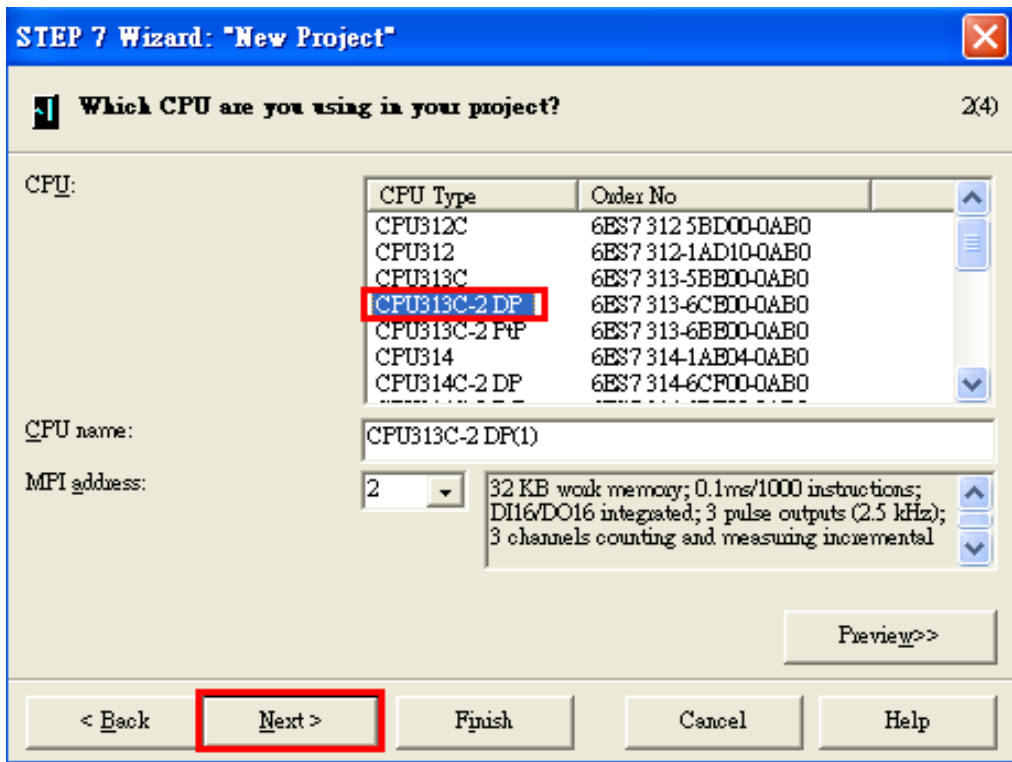


3. Set up Project

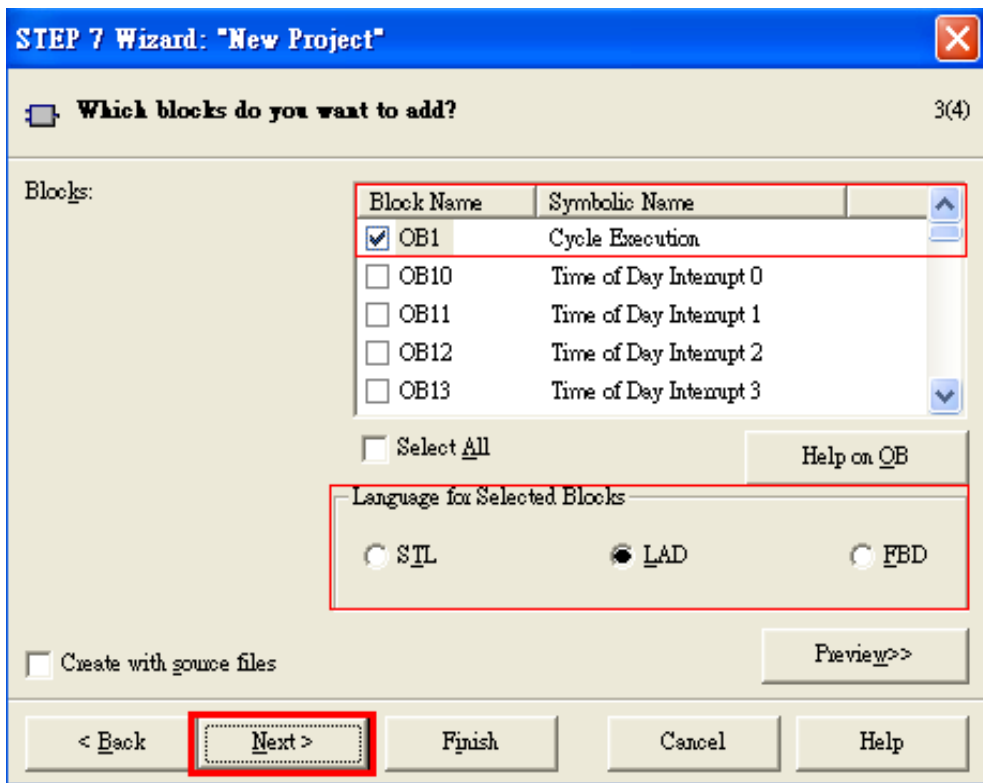
- a. Click "Next"



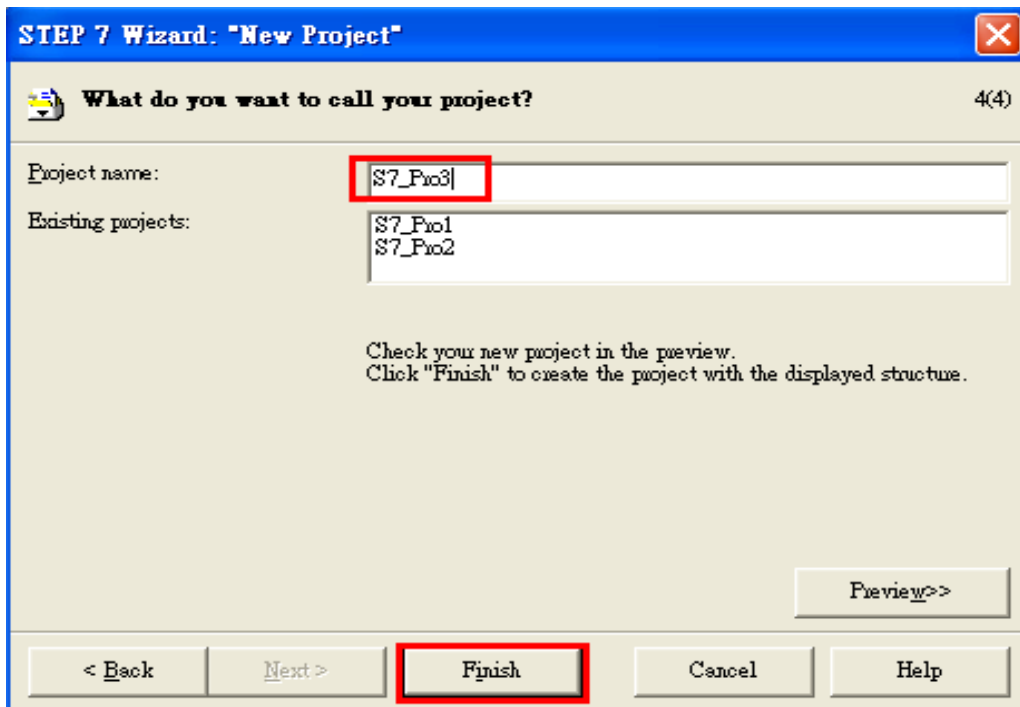
b. Select CPU type then click "Next"



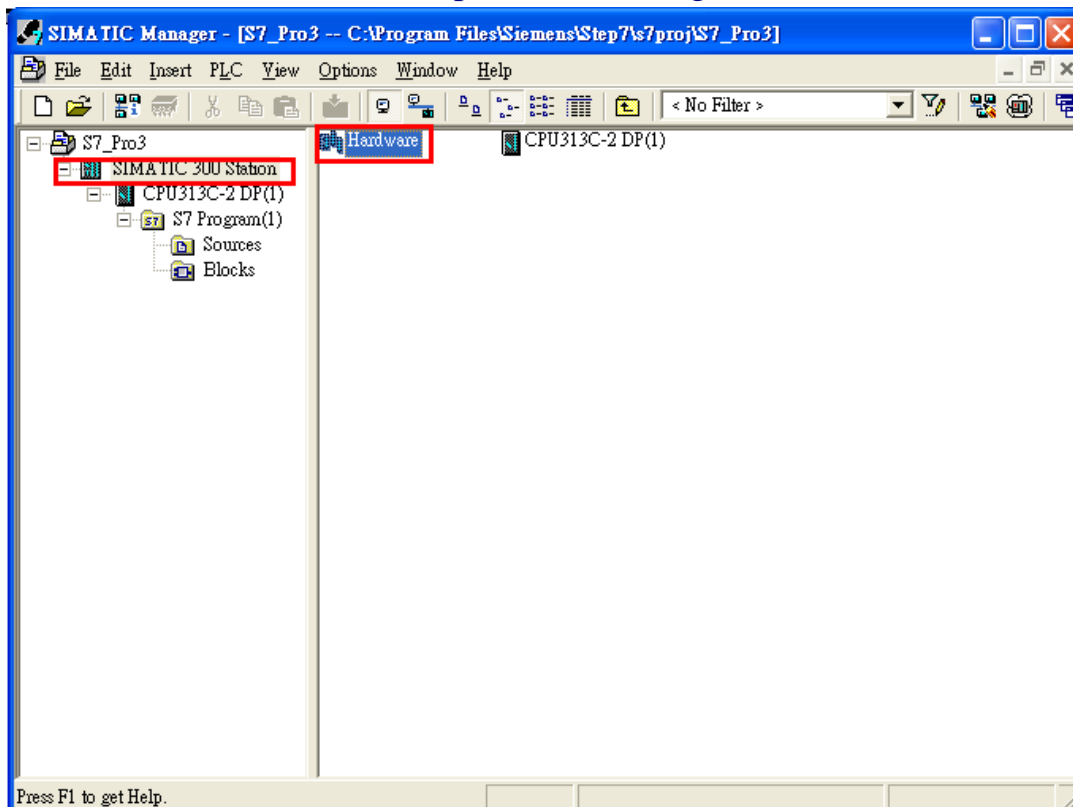
c. Select blocks and language for selected blocks then click "Next"



d. Set project name and click "Finish"

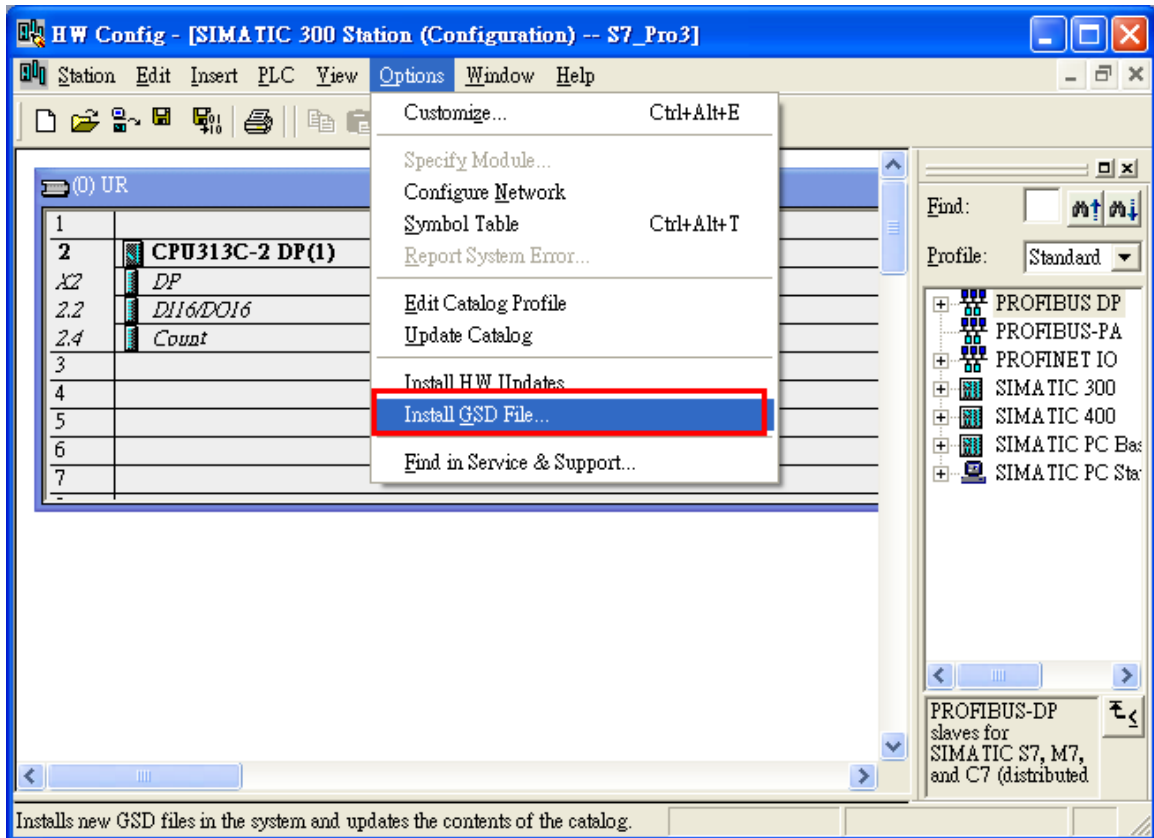


4. Double click "Hardware" to open "HW Config"

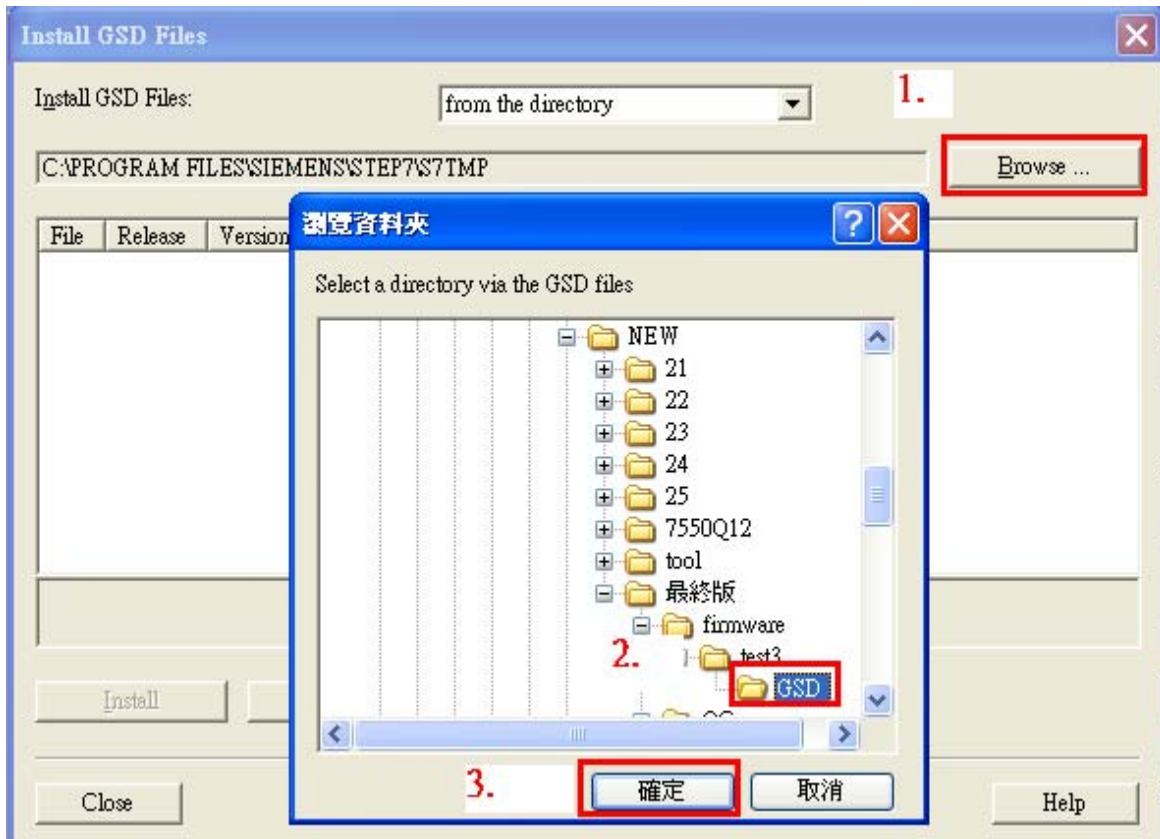


5. Install I-7550's GSD File

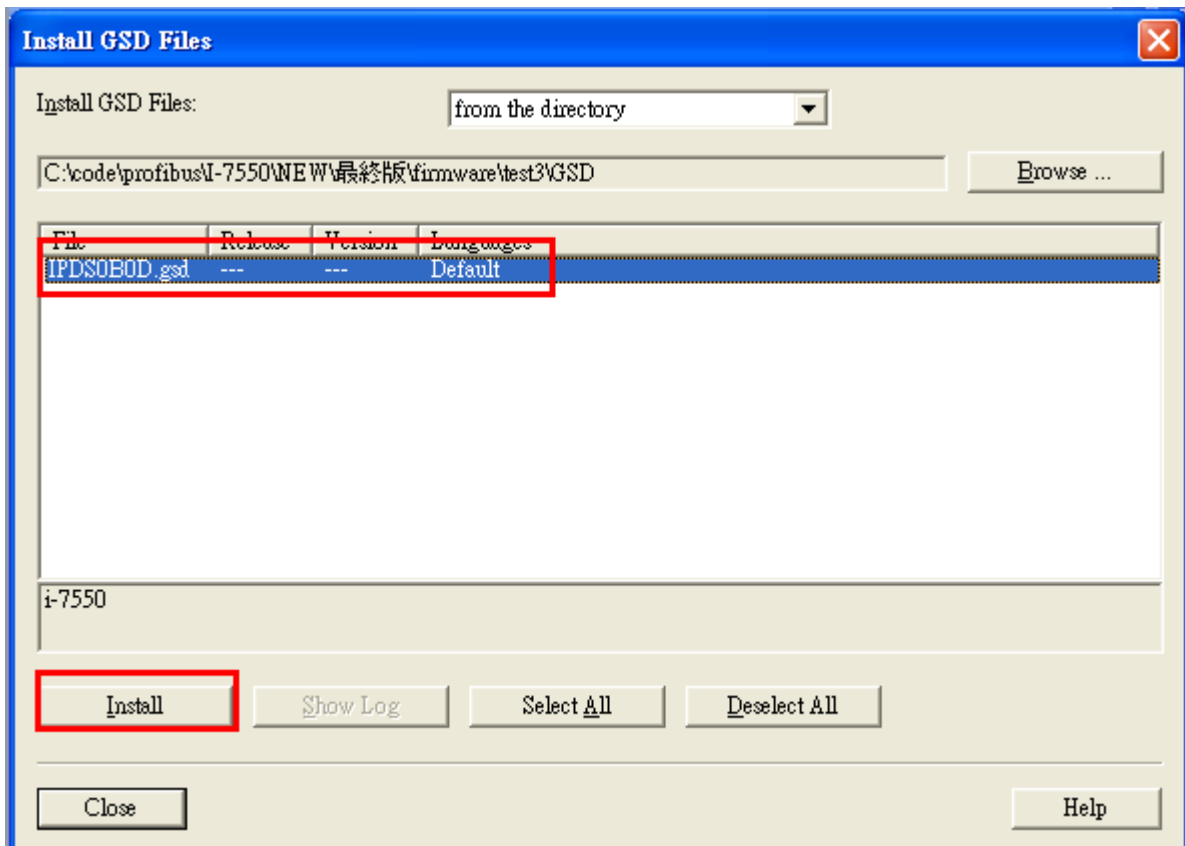
a. Click “Install GSD File” ftp://ftp.icpdas.com/pub/cd/fieldbus_cd/profibus/converter/i-7550/



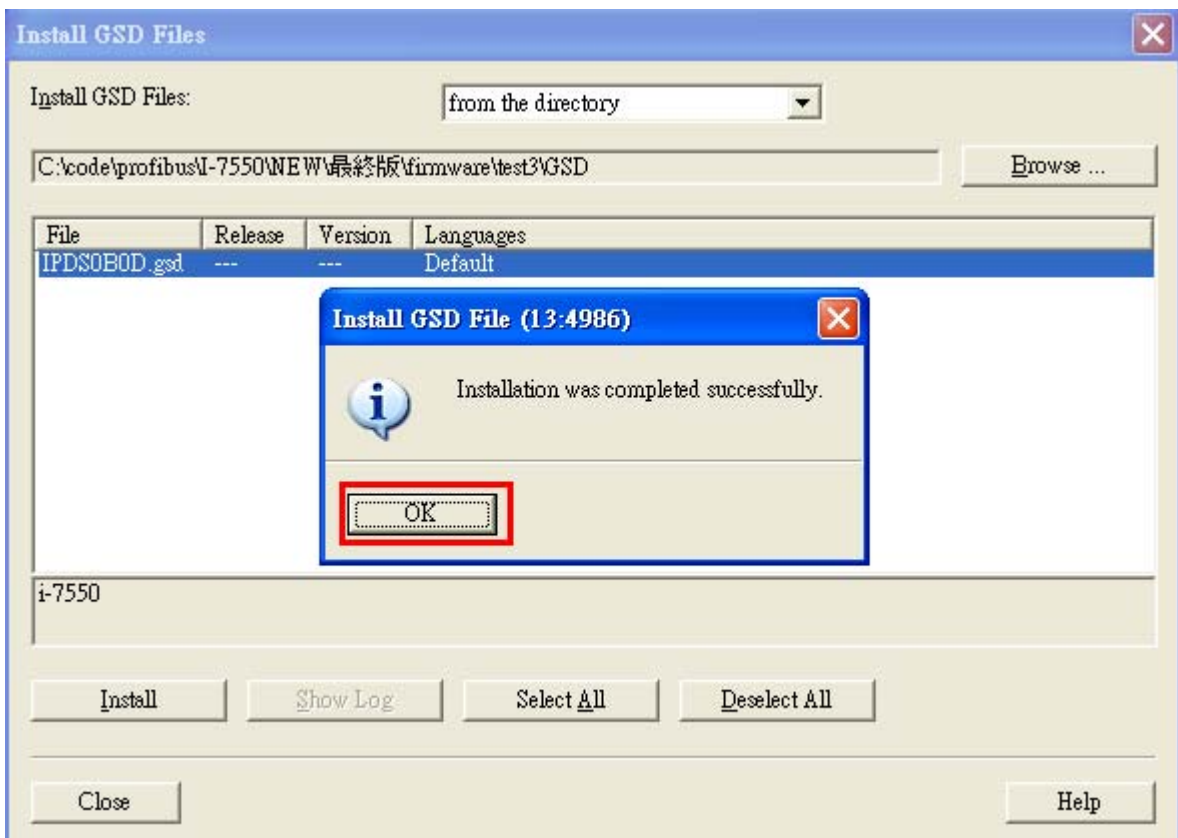
b. Select the directory of I-7550's GSD file(IPDS0B0D.gsd) and click “OK”



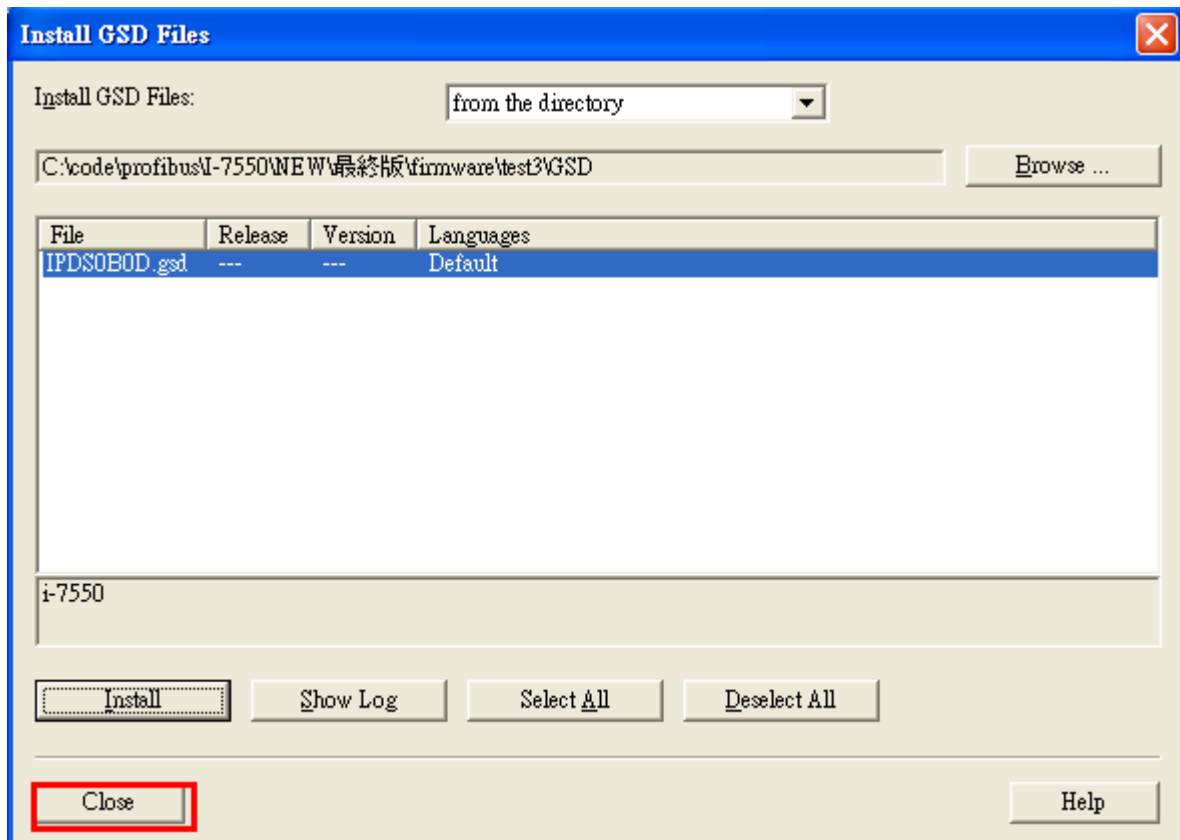
c. Click "Install"



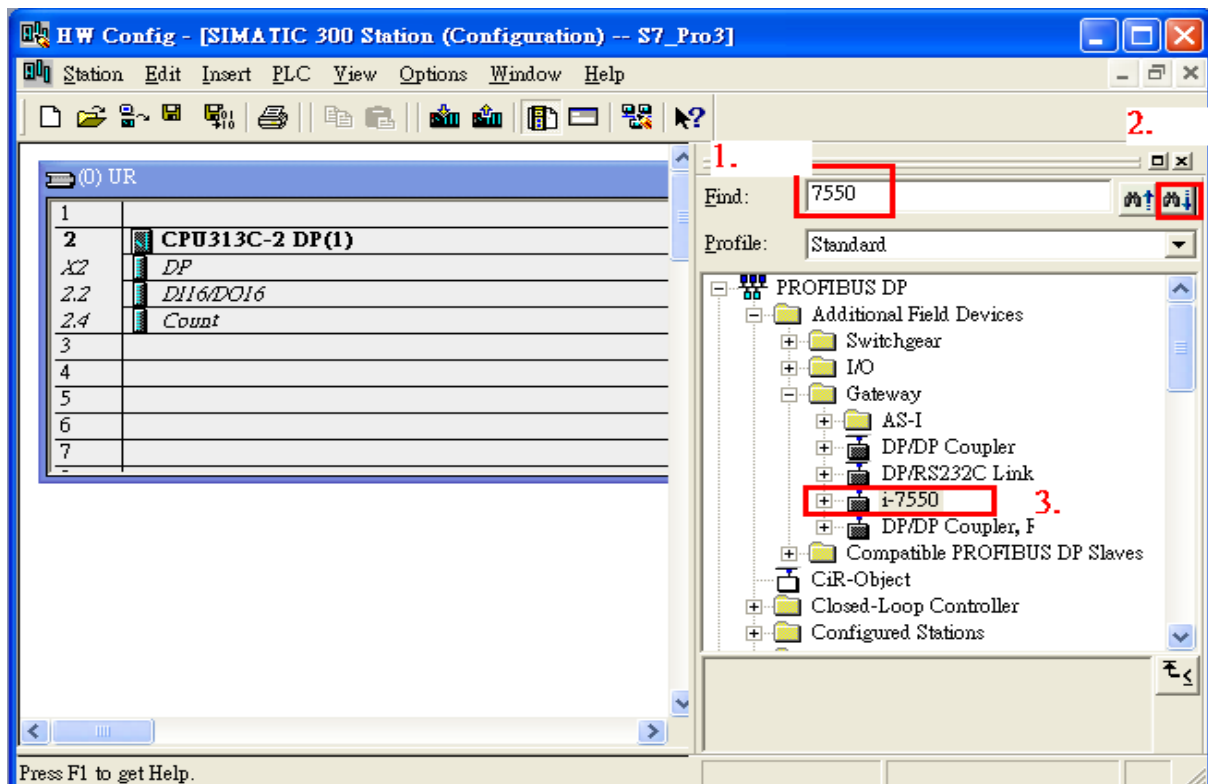
d. Click "OK"



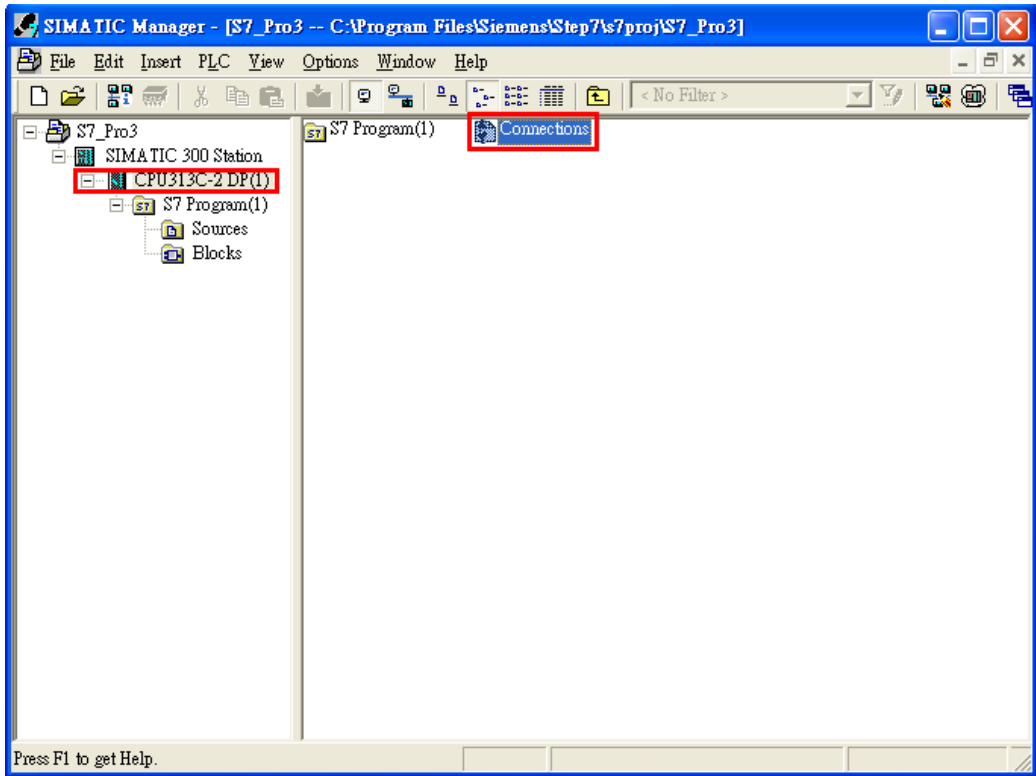
e. Click "Close"



f. Confirm I-7550's GSD file is exist

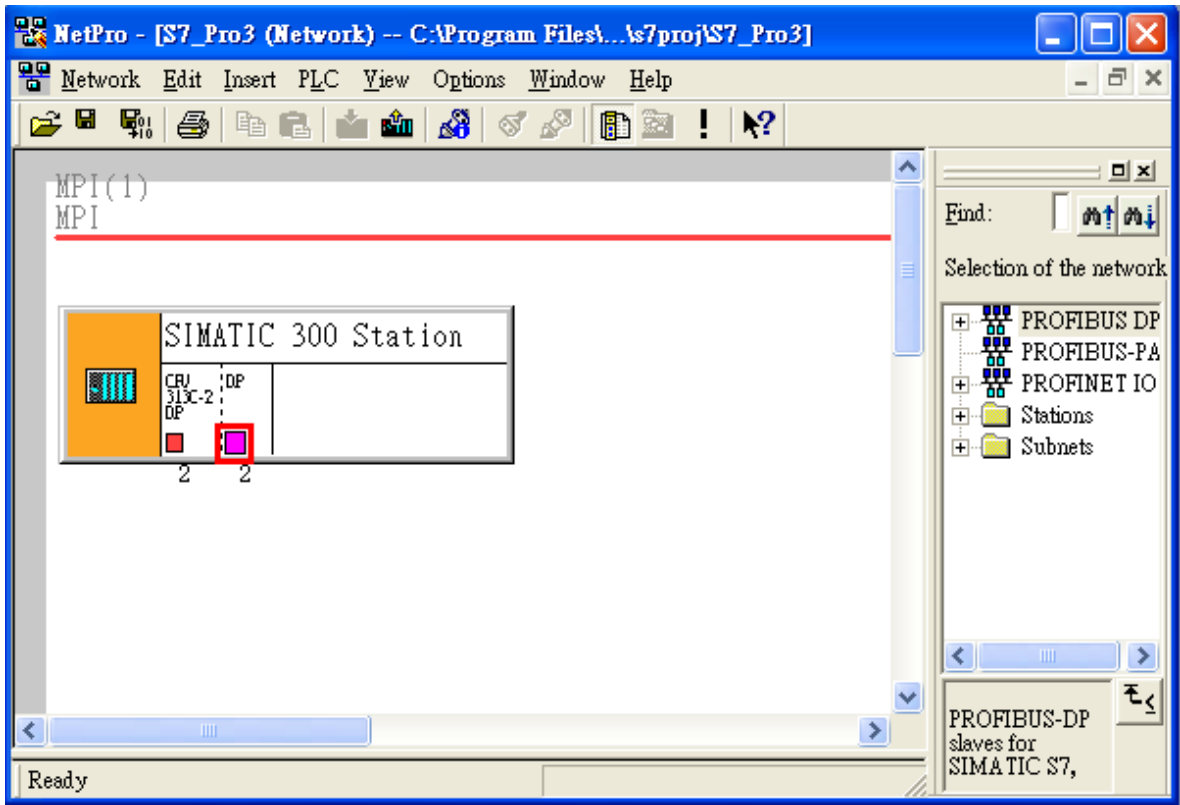


6. Double click “Connections” to open “NetPro”

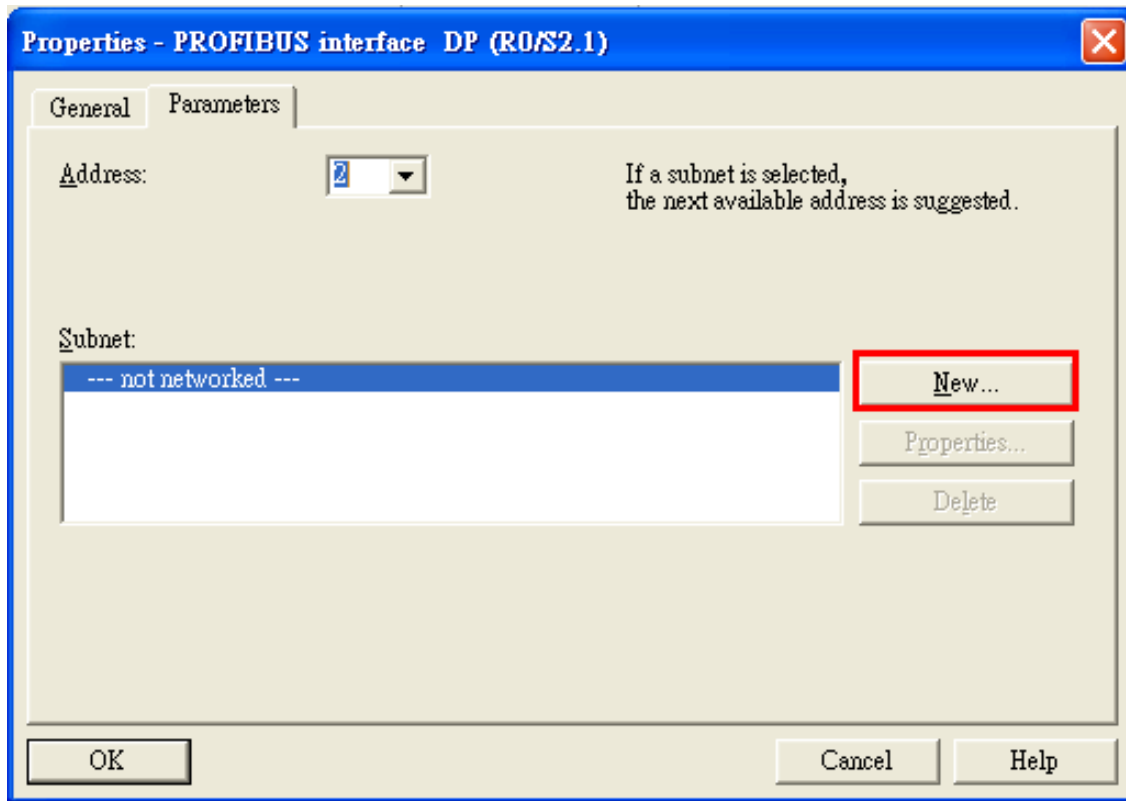


7. Add PROFIBUS subnet

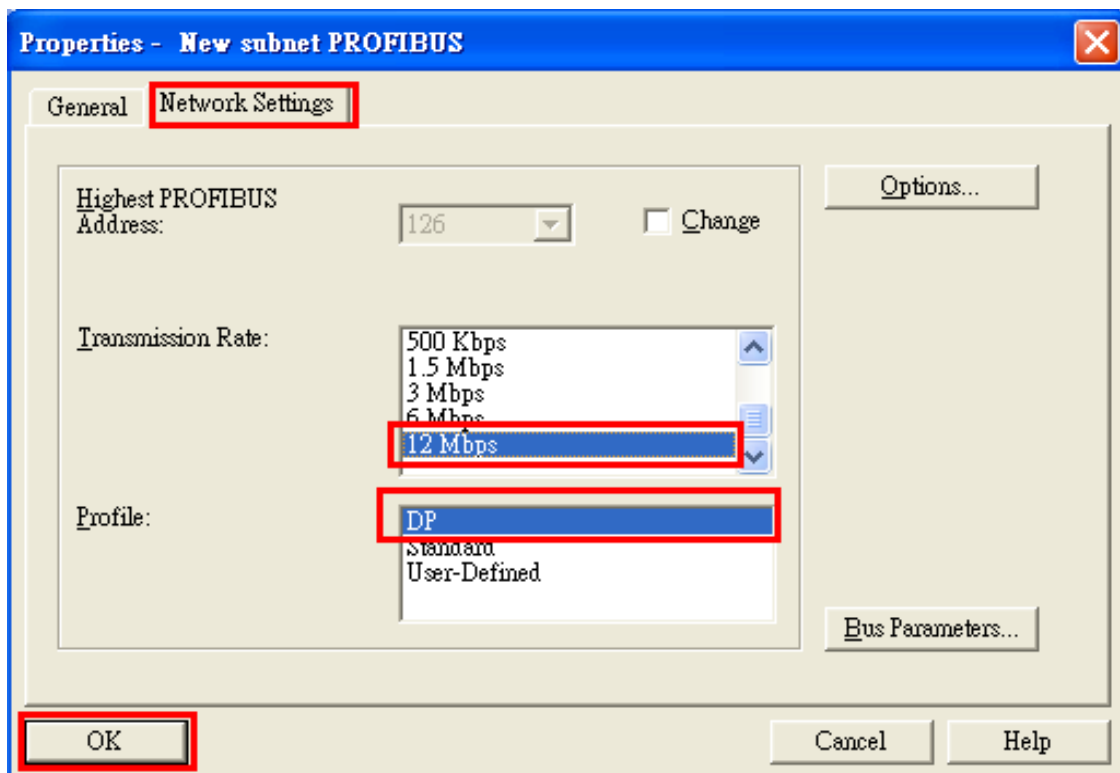
- a. double click the block of the DP



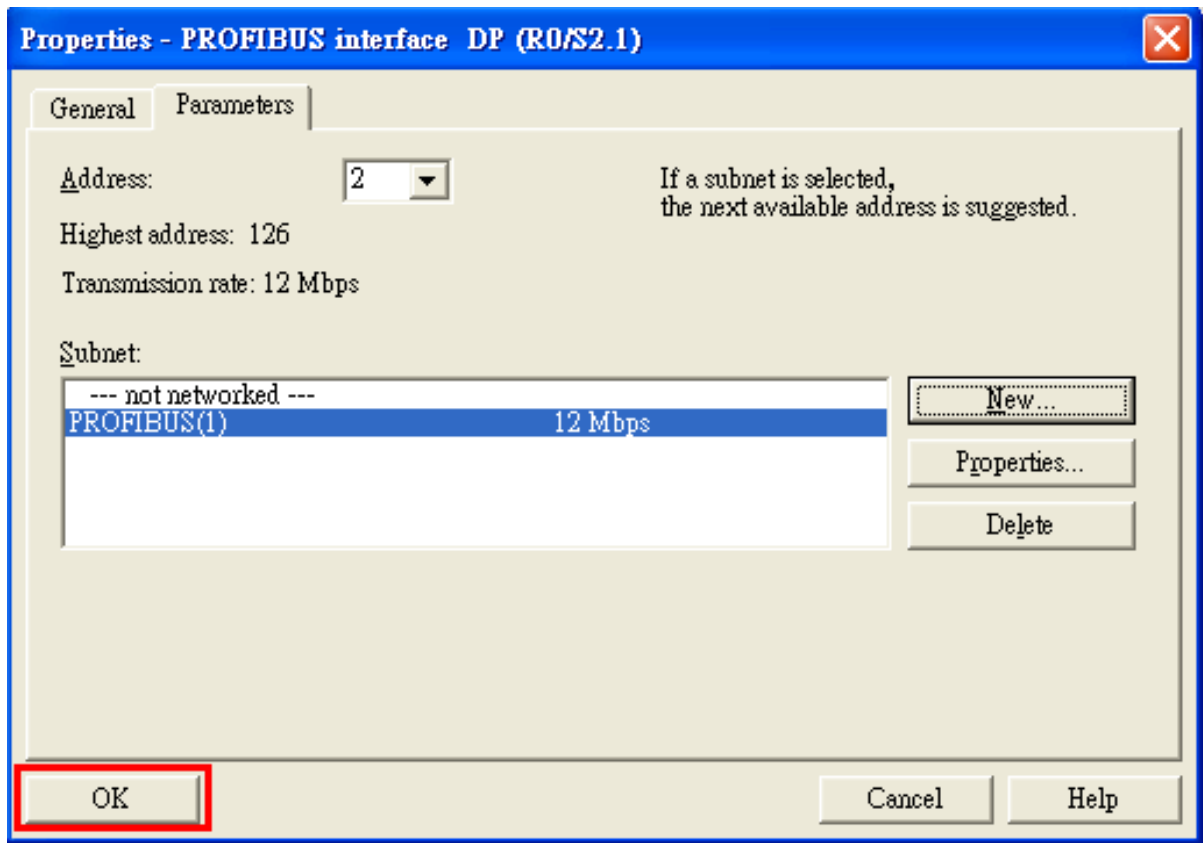
b. Click "New"



c. Select PROFIBUS Transmission Rate=12Mbps, Profile=DP and click "OK"

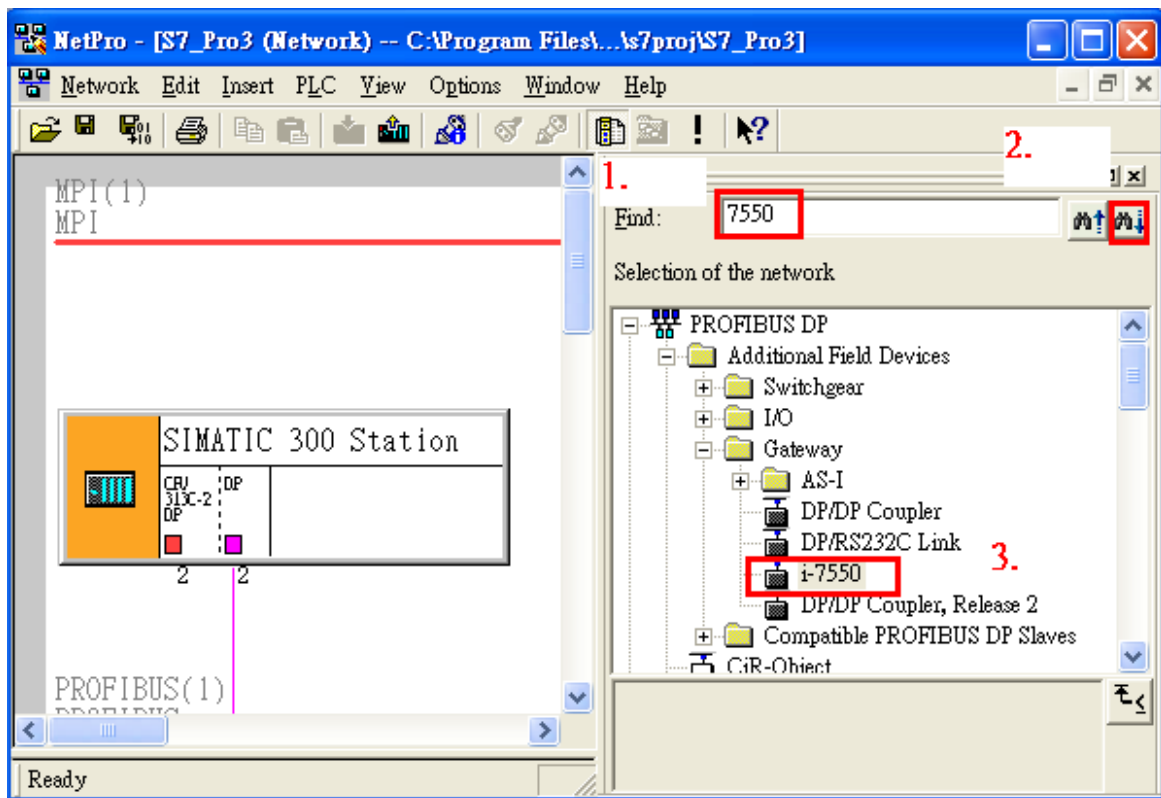


d. Click "OK"

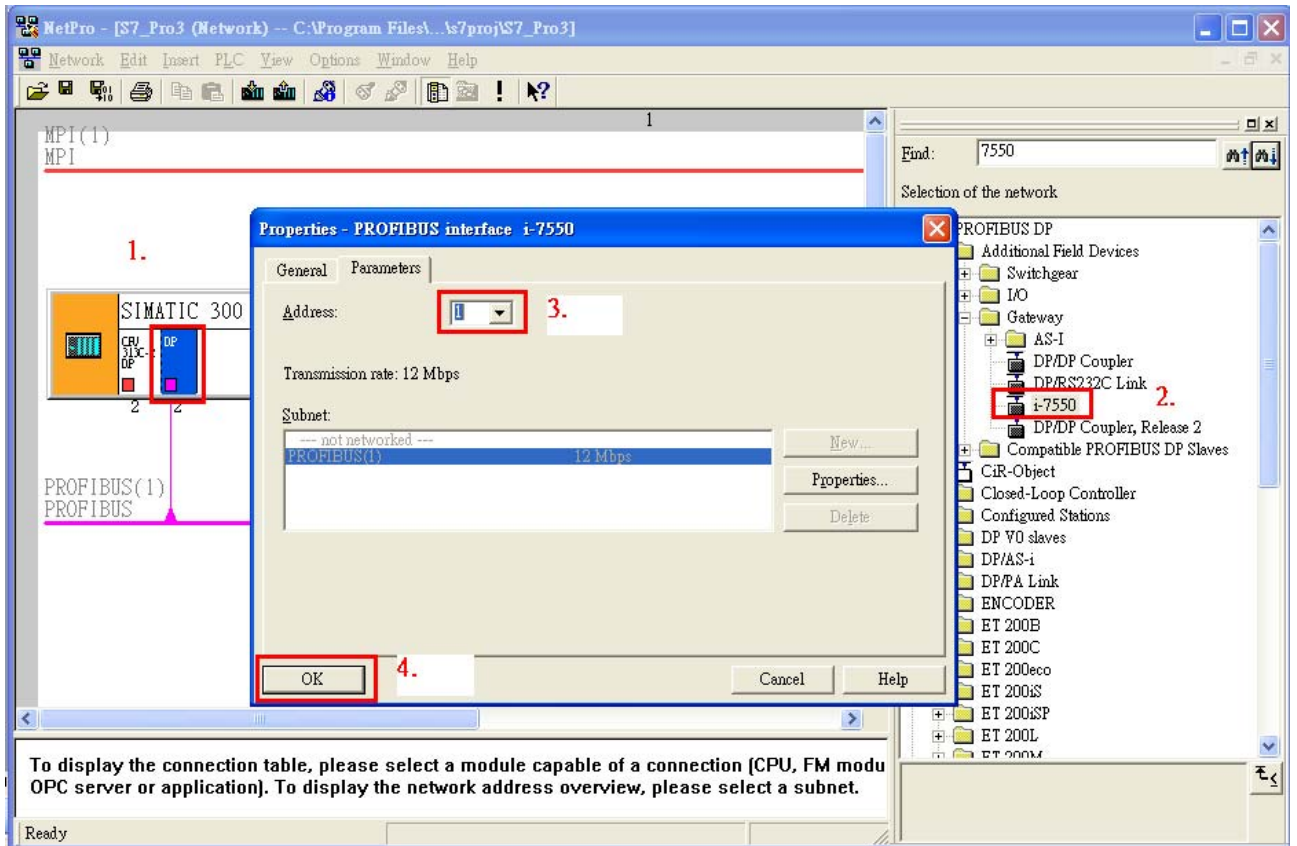


8. Add I-7550

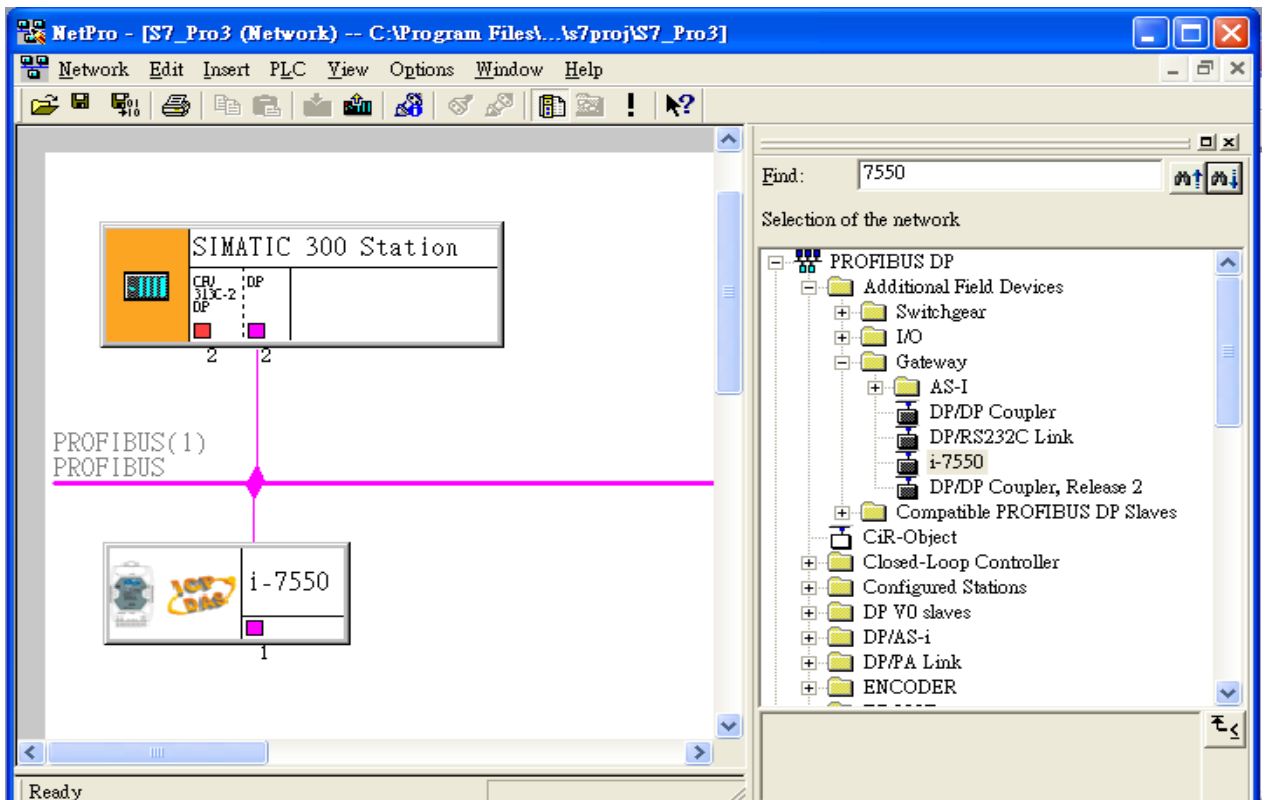
a. Find I-7550



- b. Select DP module and double click I-7550's icon and then set I-7550's address in the "Properties" dialog (this address must be the same with dip switch of the I-7550 module) and click "OK"

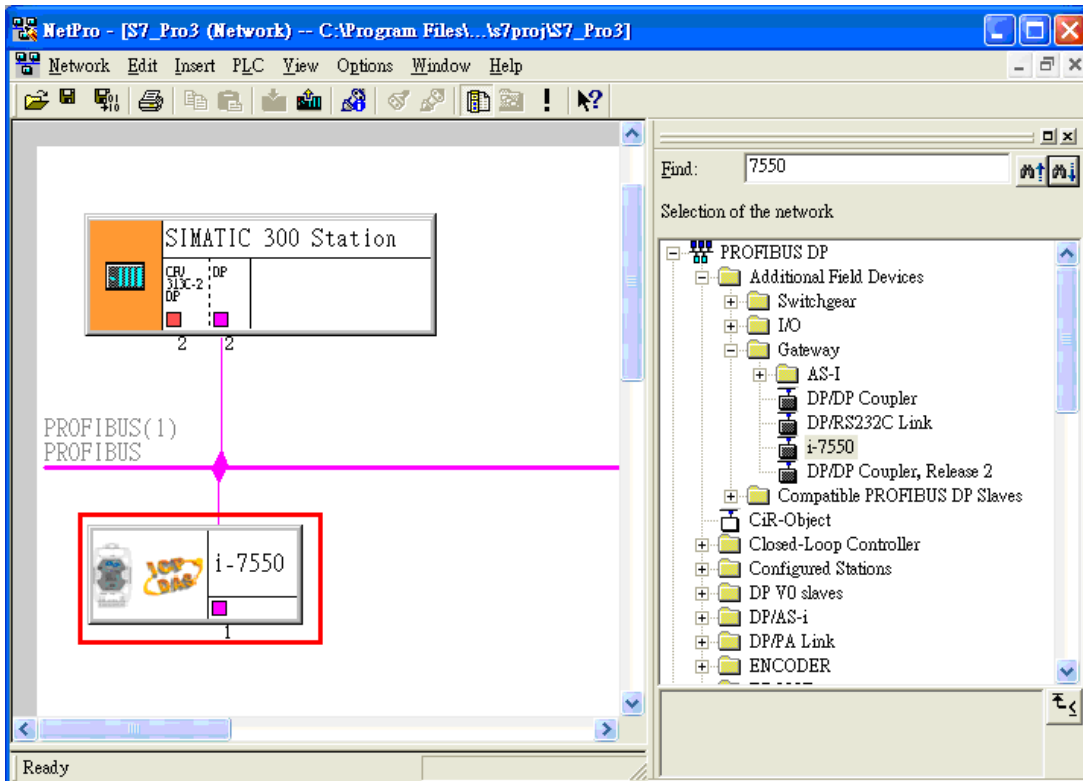


- c. I-7550 add completely

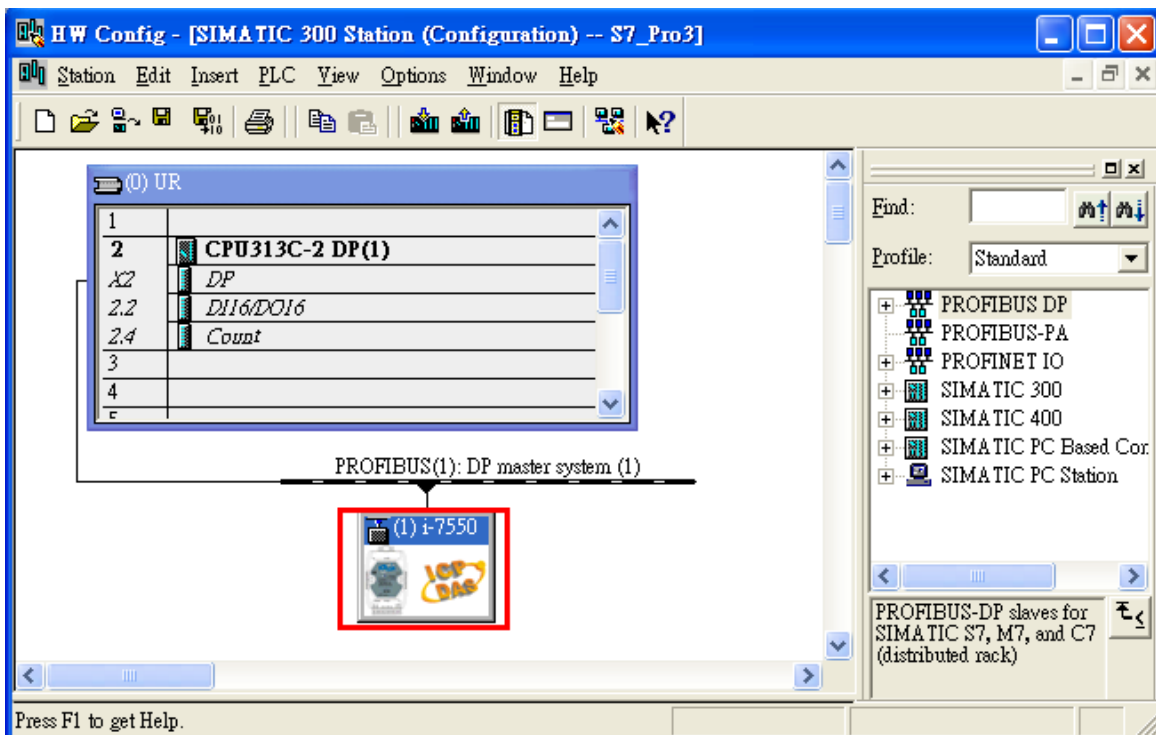


9. I-7550 parameter settings

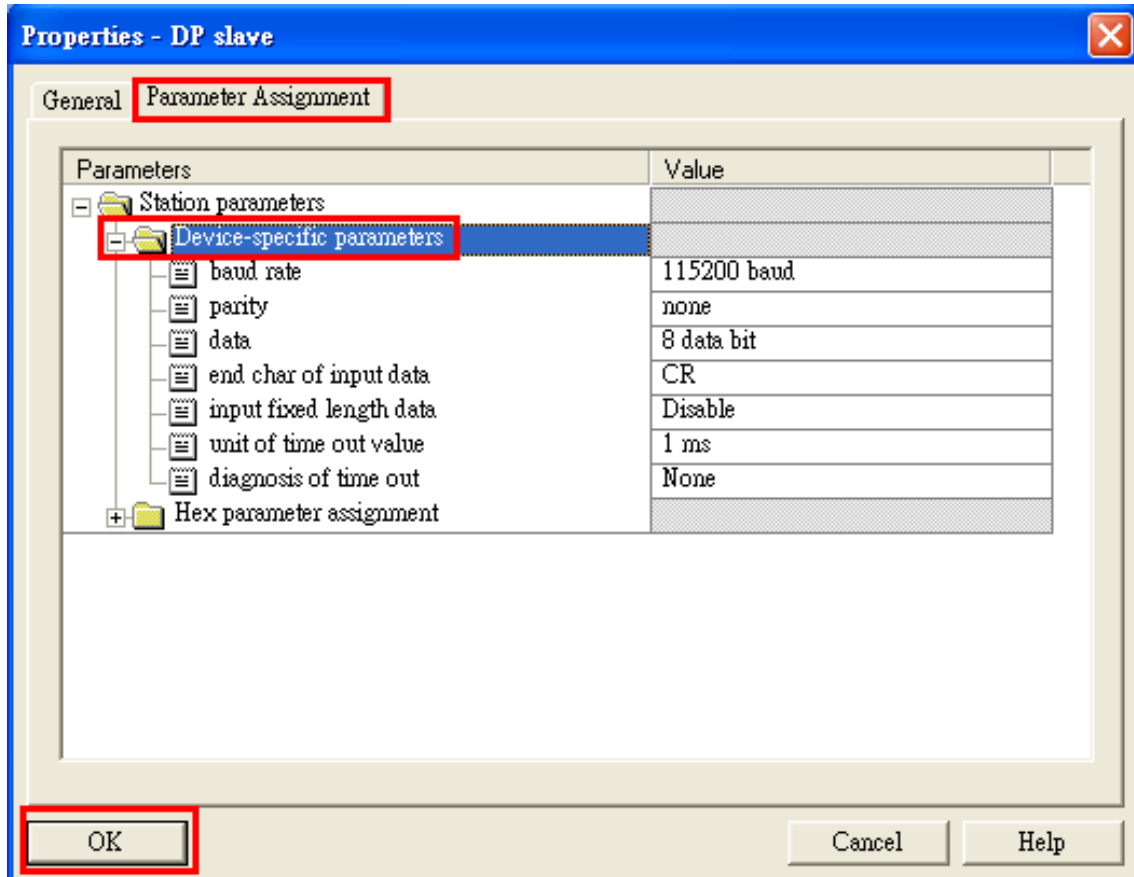
- a. Double click I-7550's icon to open "HW Config"



- b. Double click I-7550's icon to open "Properties" dialog

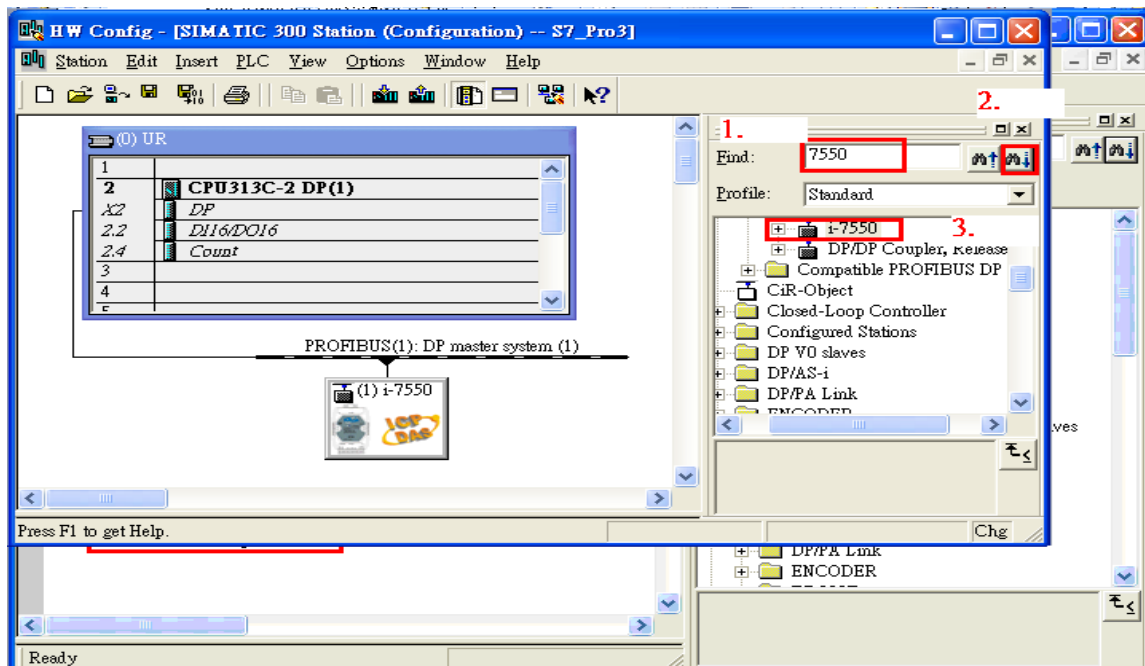


- c. Select “Device-specific parameters” folder and configure the settings (ex: baud rate, parity, data bit) and click ”OK”.

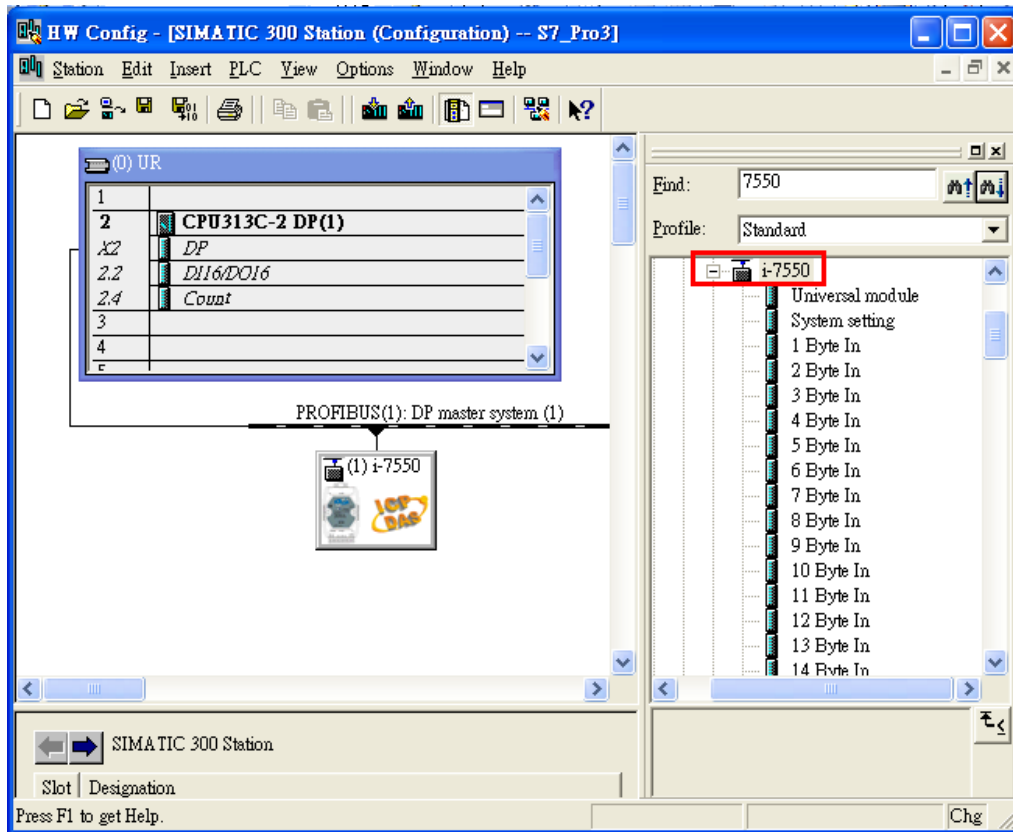


10. I-7550's module configuration

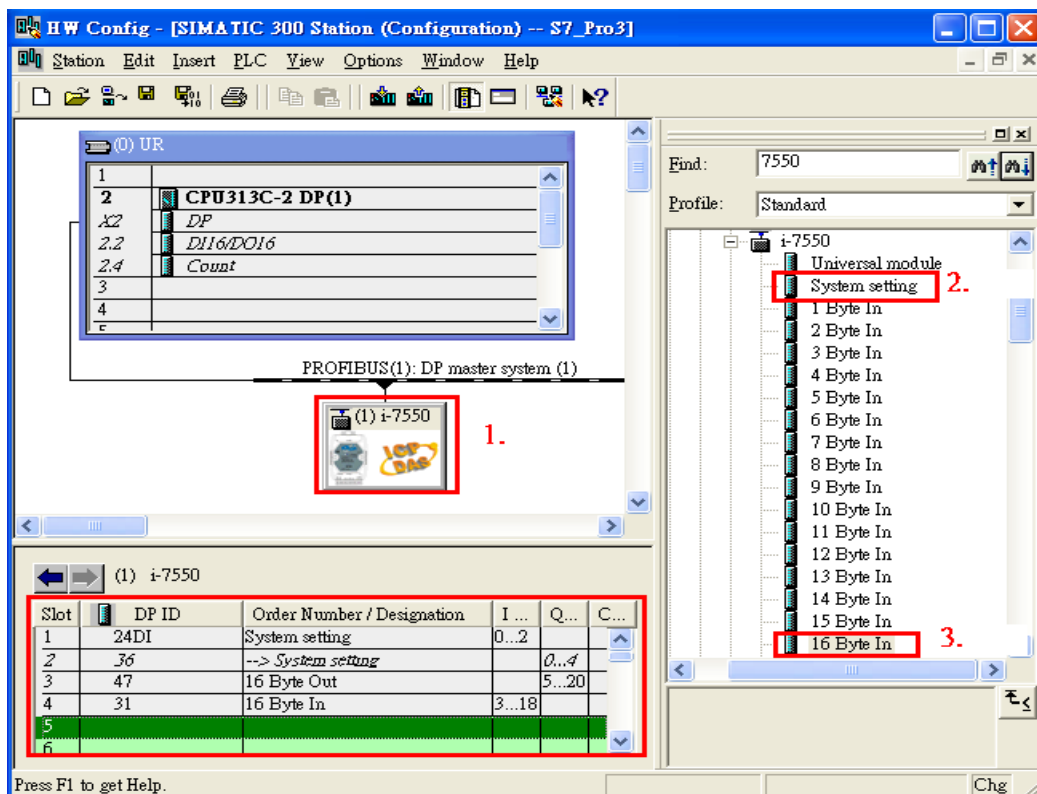
- a. Find I-7550



b. Spread I-7550's folder



c. Click I-7550 module and double click “System setting module” and select the IO modules that you need (ex: 16 Bytes IN, 16 Bytes OUT).



11. You have complete I-7550's configuration already and you just need to download the configuration to Siemens PLC ◦

